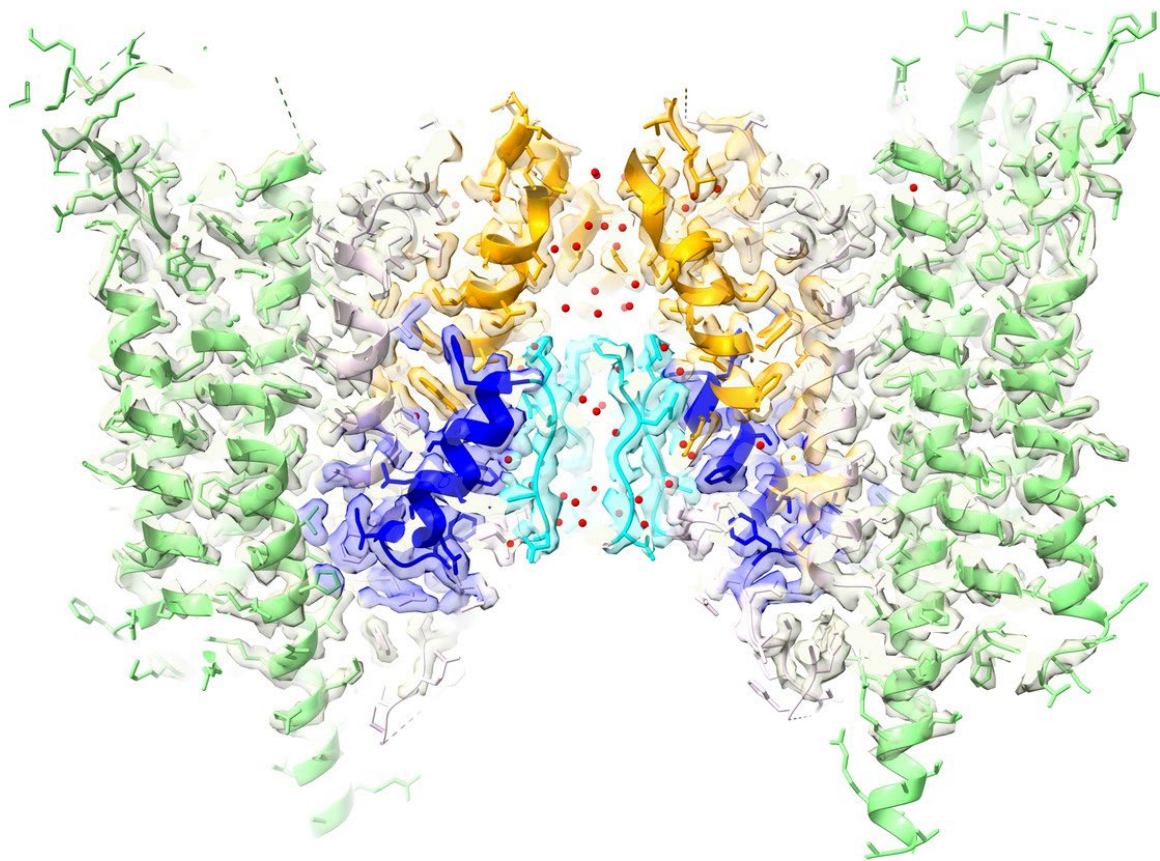


iGluR Event Guide

9th Annual Conference | July 8-10,
2023

Northwestern University, Feinberg School of Medicine |
Chicago, IL



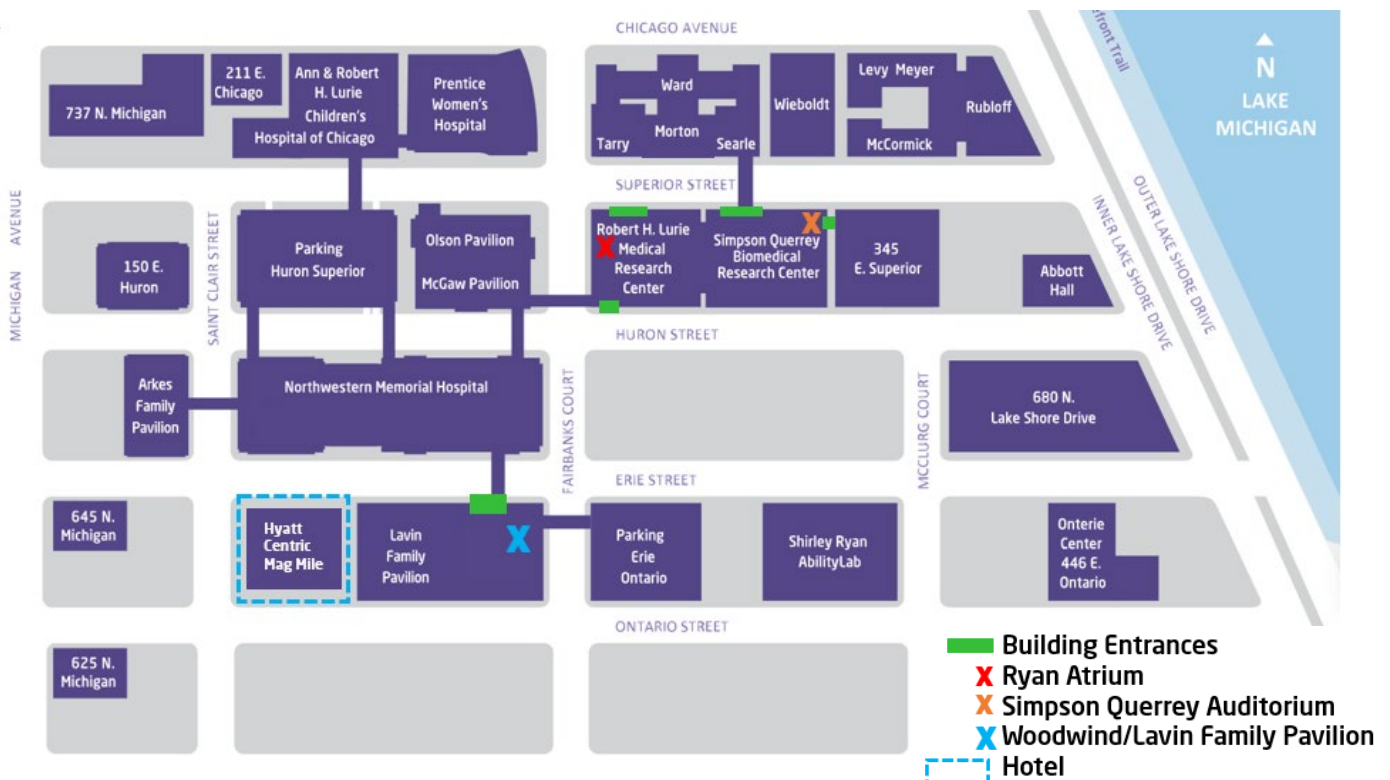
SATURDAY - MONDAY, JULY 8-10, 2023

303 E. SUPERIOR ST. CHICAGO, IL 60611

Location

Conference events will be taking place at the Robert H. Lurie Medical Research Center and the Simpson Querrey Biomedical Research Center at 303 E Superior St, Chicago, IL 60611.

The welcome reception will be held in the Ryan Atrium of Robert Lurie Medical Research Center on the west end of the building. The scientific program will be taking place in the Simpson-Querrey Auditorium on the east end of the building.



Dinner

Conference dinner will be taking place Sunday July 9th at 6:30pm.

Woodwind - [259 E. Erie St., 18th Floor, Chicago, IL 60611](https://www.northwestern.edu/directions/visiting/visiting-woodwind)

To access the entrance to Woodwind, you must first enter Northwestern Hospital via the entrance labeled “Lavin Family Pavilion”. Once inside you will see elevators and a booth directing you to the 18th floor.

Note: Only guests who RSVP'd when will be able to join us for dinner, if you are unsure if you RSVP'd, please email us at iGluR2023@northwestern.edu

Transportation

From O'Hare Airport (15 miles)

We recommend using an Uber/Lyft or a taxicab. Fares should run about \$40 unless there is heavy traffic or surge pricing on the former.

Public transport is available starting at the Blue Line El station at O'Hare. Disembark from the El at the State and Van Buren stop and transfer to the #66 bus eastbound to Fairbanks and Huron, which is directly opposite the Lurie Medical Research Center.

From Midway Airport (13 miles)

We recommend using an Uber/Lyft or a taxicab. Fares should run about \$40 unless there is heavy traffic or surge pricing on the former.

Public transport is available starting at the Orange Line El station at Midway. Disembark from the El at the Chicago and Milwaukee stop and take the #146 bus northbound to Michigan and Huron, which is two blocks west of the Hyatt and the Lurie Medical Research Center.

Getting around Chicago

Taxis and Uber/Lyft cars are abundant in downtown and are used routinely. The El and CTA buses are cheaper and also used frequently downtown and to access nearby neighborhoods.

- [Northwestern University Campus Map](#)

Parking

Parking in downtown Chicago can be expensive. Options near the venue include:

- Hyatt Centric Mag Mile | \$76/night valet parking with in/out
- Erie Ontario Self Park | \$47 for 24 h

Parking apps that are commonly used include [ParkChirp](#) and [SpotHero](#). These services find available parking spots in your area of interest and offer both hourly and daily options with a combination of self-park, valet, and in/out options. You can download the apps in the Apple or Google Play stores and browse available parking lots around campus.

Meals

Meals will be served outside of Simpson Querrey Auditorium in the Atrium space. During both days of the meeting, we will be offering:

- Continental breakfast from 7:30 to 8:00am
- Boxed lunches (either a Sandwich or Salad with sides)
- Beverages throughout the day including coffee, tea, and water

A Starbucks is located across the Superior St. from Simpson Quarry in the Searle building. Many restaurants are within walking distance should you choose to eat off campus, including several on the mezzanine level of Northwestern Memorial Hospital (Subway, Café L'Appetito, Greek Kitchen, Panera Bread, Protein Bar, and Burrito Beach).

Restaurants

Lunch

In addition to the options in NMH, several other restaurants are located in the vicinity of the NU campus and Hyatt. A few that we like include:

- [Beatrix](#) | American café, bakery, wine & cocktail bar, 676 N St Clair St (directly across Erie St. from the Hyatt)
- [Cafecito](#) | Cuban sandwich and coffee café, 215 E Chestnut
- [LYFE Kitchen](#) | Healthy food, 270 E Ontario
- [Nando's PERi-PERi](#) | Afro-Caribbean chicken, 227 E Ontario St
- [Ramen San](#) | Ramen noodle shop, 165 E Huron St
- [Tallboy Taco](#) | Street tacos, 676 N St Clair St

Dinner

There are many great restaurants located within a 20-minute walk from the conference venue in the Streeterville, River North, and Gold Coast neighborhoods. We are happy to offer suggestions if you have any questions or are looking for specific types of cuisines.

Poster presentations

Poster presentations will take place during the lunch hour. Poster presenters will line up first to get a head start with lunch. We do ask that you keep your poster up for the duration of the meeting, but the amount of time you spend presenting each day is up to you.



Questions?

We are happy to provide more info and recommendations, you can reach out to your event hosts at iGluR2023@northwestern.edu or by calling 312.503.4893

